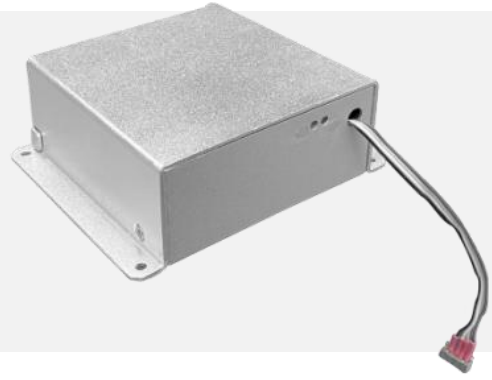


TCM6003 Series

Intelligent High-Voltage Power Supply

20kV,6W,Qualify for UL and CE Certificate



Teslaman TCM6003 The series is a 6W High voltage module, output voltage can be achieved through the gear switch 10kV, 15kV, 20kV Switch between arbitrarily. TCM6003 series uses switching mode power conversion technology provides high-performance product design with low noise and higher efficiency. TCM6003 The series produces excellent ripples and stable performance specifications from compact packaging. TCM6003 series is intelligent modular high voltage power supply, digital control method can meet the customer's multiple control settings functional needs, comprehensive and fast voltage-current transient response ability, and ensure the fault-free operation of the power supply. The product has complete functions and a wide output range.

- Input DC12V±10%.
- Output Voltage 10kV,15kV,20kV.
- Maximum Output Power 6W.
- Over-Voltage/Over-Current/Arc Protection.
- Gear Switch Controlled Output Level.
- Quality for UL and CE Certification.

Typical Application:

Plasma antivirus, dust removal, air purification, electrostatic field, capacitor charge and discharge.

Specifications:

Input: DC12V±10%

Output Voltage: 20KV power-power high-voltage output,0.3Master of Arts.

Voltage Control: Three-speed fixed output can realize constant voltage and constant current control, and the current is limited to 0.3mA.

Voltage Adjustment Rate:

Relative load:0.01% (no load to rated load).

Relative input:0.01% (the input voltage changes to ±10%).

Current Adjustment Rate:

Relative load: 0.01% (no-load to rated load).

Relative input: 0.01% (the input voltage changes to ±10%).

Ripple voltage: rated voltage is better than 1% rms.

Ambient Temperature:

Operating temperature: 0°C to 50°C.

Storage temperature: -20°C to 80°C.

Temperature Coefficient: Usually 100 ppm per degree Celsius.

Stability: After one and half hour preheating, it is better than 0.1% every 8 hours.

Humidity: 10%-90% non-condensing.

Voltage Current Accuracy:

Voltage accuracy is ± (0.5%+1) and current accuracy is ± (4%+1).

Dimensions:

Wide: 92.4mm; Height: 40mm; Depth: 96mm.

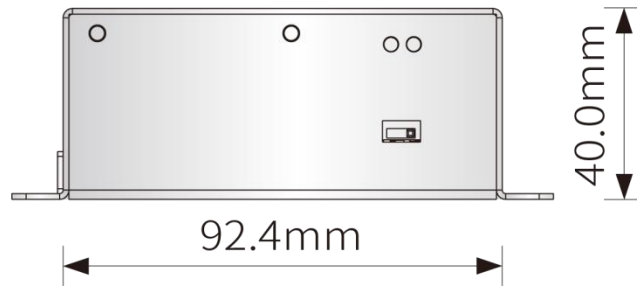
Weight:0.8Kg.

High-Voltage Output Cable:

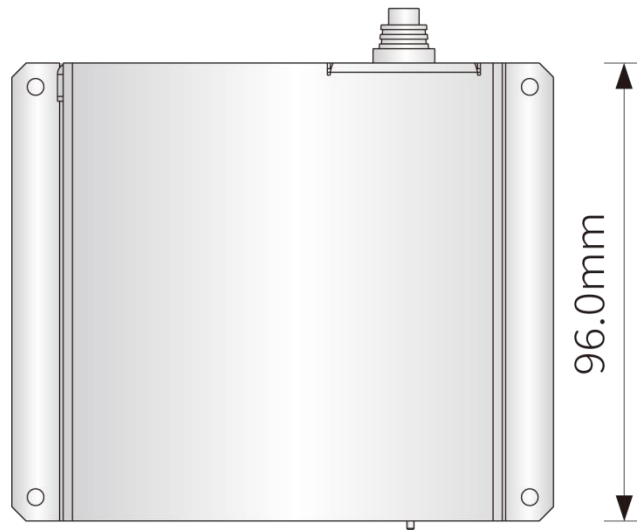
The power supply comes with an unshielded high-voltage cable. Standard high-voltage cable length is 2Meter, 5.5 mm outer diameter, unpluggable.

Certification: UL and CE certification upon request.

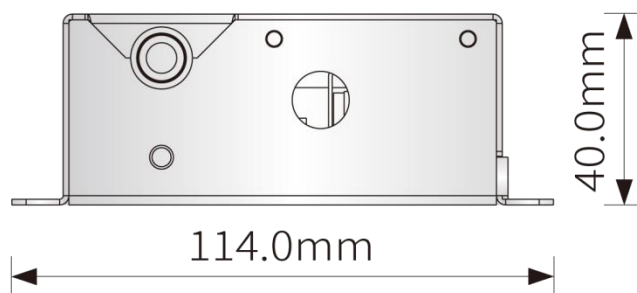
Overall Dimensions: mm



Front View



Top View



Back View